



## March to April

WE meet at the Methodist Chapel.  
More information from St Leonard's  
Church Office **01256 782724**

### Sitting and Standing Keep Fit

2.00-3.30pm every Thursday

### Table Top Gardening Monthly

2.00-3.30pm every 3rd Wednesday 16 April

### Flower Arranging Monthly

2.00-3.30pm every 4th Monday

28 April (actually 5th Monday as 4th is Easter Monday)



## Fellowship Walk

### 'Fields Stripped Bare'

How is your Lenten journey going?  
As part of this journey, we warmly  
invite you to join us each Wednesday  
morning starting from the Church at  
10 am.

This will be a safe space of praying  
into anything that the Holy Spirit has  
stirred within us. As we walk amongst  
'Fields Stripped Bare' we will be  
reflecting on our Lenten  
Journey knowing that God goes  
before us, and is beside us, and is  
behind us....in spite of the barren  
space that surrounds us. For look the  
sky horizon of our Easter Redemption  
is bright!.

ALL WELCOME.

Start Point: St Leonard's Church  
**Wednesday, 2 April @ 10.00 am,**  
Annie Wilson [07740 597698] /  
Barbara Robson [07722 957057]

### Please pray for

Mothers - those who have never  
had the chance, those who have  
lost children, those who had  
challenging relationships, those  
who have had positive mothering  
roles models, those who are  
expecting at the moment.

### Thought for the week

Being a mum isn't a job - it's a full-  
time unpaid career

I was in the chemist and I asked an assistant, "What gets rid of viruses?"  
She said, "Ammonia cleaner." I said, "Oh sorry, I thought you worked



Mothering Sunday  
Sunday 30 March 2025

# Welcome



Summer Time: Clocks go forward today

## CAFÉ CHURCH



church ... but not as you know it!  
**10.00am Sunday 30 March**  
**@ St Leonard's Centre**  
everyone is welcome



## This Week Sunday 30 March

**8.00am** Communion Service @ St Leonard's Oakley

**10.00am** Café Church @ St. Leonard's Centre  
Valleys Talk Series: Week 4. 'Valley of Giants'

### Sunday 6 April

**9am** Communion service @ St. Lawrence, Wootton.

**10am** Morning Service with Christening @ St. Leonard's, Oakley

### Morning Prayer

Weekday mornings online only. No more in person.



## Get In Touch

St Leonard's Church Office Rectory Road  
Oakley RG23 7ED 01256 782724

Open: 9.00am - 12.00pm Mon,Tue,Thu,Fri

Email: [office@oww.church](mailto:office@oww.church)

Bookings: [bookings@oww.church](mailto:bookings@oww.church)

Website: [www.oakleywithwootton.org.uk](http://www.oakleywithwootton.org.uk)

Rev'd Ben Kautzer Ben's day off is Friday

[ben@oww.church](mailto:ben@oww.church) 01256 420903

Rev'd Ceri Deosun 07529 901800 Day off Thurs

Rev'd Ed Haycock 07534 111668 Day off Friday



## Something new! THE BOX

WE are mindful that the times when people need to sit and reflect on the service at the end are increasing, especially with *The Valleys* series.

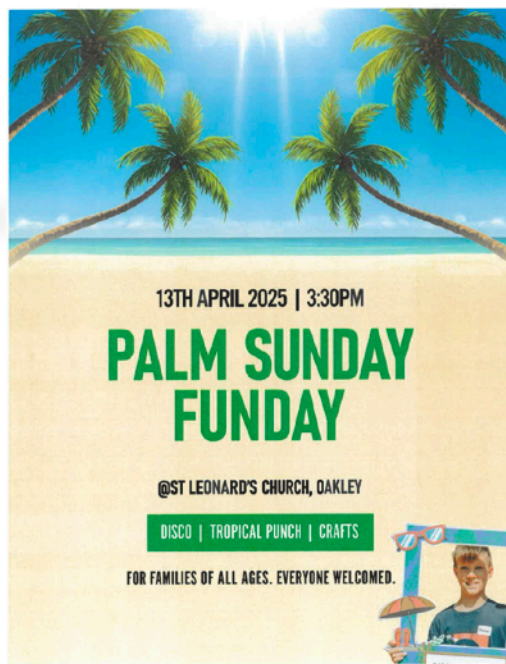
As a result, we are asking people to leave the service quietly and make your way over to the Centre for a coffee and a catch up instead.

Also, to cut down the amount of 'business' done on a Sunday, we are trialling The Box.

Any visiting or pastoral requests, forms, orders etc. for the office or the leadership team can be left in The Box, which will then be dealt with on Monday mornings.

Pens and paper will be provided, but you can obviously bring these along in an envelope if you prefer.

It will be at the back of the Church until the end of the 10am service, when it will transfer over to the Centre ready for coffee.



## Who let the Dads out again?

THE next Dads get together is on **Saturday 12 April** from 10-11:30 in the St. Leonard's Centre, come along for coffee, snacks and activities for the children.



## Annual Parish Council Meeting (APCM)

THE Annual meeting of church members is taking place in St Leonard's Centre at 7.00pm on **Monday 28 April**.

Please pop this date in your diaries so that you can come along and hear about what has happened over the past year, and looking forward to the plans for the next!

## Electoral Roll - EVERYONE needs to reapply

THE Electoral Roll is a list of all the members of the church, and allows you to vote at the Annual Meeting and to stand for the Church Council.

Every six years everyone comes off the roll and a fresh one is started. Everyone needs to reapply. You may have already received an invitation by email, if not please contact the office.



## Private Prayer

10.00am-4.00pm every day @ Wootton



POINT your phone at our QR code to take you to the church web site.

## Going Deeper

THIS will return on **22 May** once the Sanctuary Course has finished.

IF you would like to support the Parish financially, please contact the office for information about the Parish Giving Scheme.